

# Return to 1616 Conducting Scientific Surveys



Scientific surveys are used to estimate populations of plant and animal species. The information gathered can be used to monitor the health of species and habitats.

**Read** - Study Measuring wildlife changes, past Landscape articles, or Key scientific publications to learn about the scientific methods used to collect data for the Dirk Hartog Island National Park Return to 1616 Ecological Restoration Project.

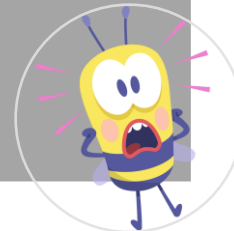
**Watch** - Watch [this video](#) to learn about how ecological surveys are conducted for the Dirk Hartog National Park Return to 1616 Ecological Restoration Project

**Explore** - Take a virtual tour to:  
Study the Google Earth tour on your tablet device or computers. [Click here to begin](#)  
Study the more interactive KUULA tour on your computer or upload the link ([bit.ly/ReturnTo1616](https://bit.ly/ReturnTo1616)) if you have a VR headset like the Oculus Quest 2. [Click here to begin](#)

Why are ecological surveys conducted?



How are ecological surveys conducted?



What is the information collected from ecological surveys used for?

